

Technical Datasheet SLM0750XD1S0-S-X7 REV. -

DuraBrite Nano Explorer X7 is the first ultra-portable lighting gear that offers powerful yet linearly dimmable optics with a very respectable and useable run time. The X7 weight distribution is expertly engineered so it feels featherlight and comfortable in your hand to allow for extreme mobility.

Designed for professional and serious recreational users who require a significant amount of light for exploratory and safety purposes, the X7 is built on the Red Dot Award winning architecture of the *Nano Sport*, with a 100Wh Li-Ion battery pack beautifully integrated. Therefore, you now have a legendary 7,000 lumens in your hand and can point at exactly where you want lit for almost 2.5 hours at maximum brightness. You can run it for a whole day easily if you dim it down a little via the European made on-body precision dimmer.

The *Explorer X7* uses state-of-the-art IP67 sealed magnetic ports for power feed and charging, a pioneering concept in the industry. When the ports get soiled in rough outdoor applications overtime, users can simply flush them clean with water and they will work as good as new for the life of the battery, providing reliable electrical connections.

Each unit also comes with a shock absorbing stabilizer base made out of an extremely tough TPU resin. It allows the users to elevate the X7 so it can be placed nearly anywhere including sand, mud, grounds full of debris, hot and frigid surfaces, slopes with extreme irregularities, and even a stream of water without the fear of submerging the light. The stabilizer base can be removed and installed without tools and is precisely engineered so that the light (with battery installed) can be tilted to extreme angles without toppling.

A quick release button works together with a track system allows for a quick and easy battery swap in the field, continuously powering you through your mission and activities with no down time and you will no longer fear the dark.



Durabrite Nano Explorer X7 - Explore with confidence!



reddot winner
lighting design

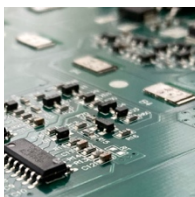
Prestigious
Design Award



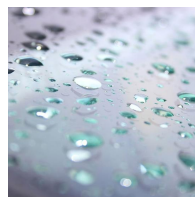
Feather
Lightweight



High Performance
Materials



Advanced
Battery
Technology



Extreme
Weather
Resistance



Designed &
Assembled
In USA

Optical & Electrical Characteristics (All ratings are at 25°C unless otherwise specified)

LED Color, CCT	Typical = 5000K (Neutral white) Lower limit = 4700K; Upper limit = 5300K
Brightness	7,000 lm (raw)
Beam Angle	20 deg (Spot) 80 deg (Flood)
Charger Input Voltage	Auto detect voltages 100 – 240VAC 50-60Hz Single Phase
Charger Output Voltage / Battery Input Voltage	33.6VDC
Charger Status Indicator	Green – Charge complete Orange – Charging *Green – Standby (when not connected to battery)
Charging Temperature (Storage Temperature)	32°F to 100°F (-4°F to 176°F)
Battery Capacity	98Wh max
Run Time	Approx. 2.3 hr continuous max output# # Run time varies based on ambient temperature and battery age
Battery Status Indicator	Green >50% Orange >20% , <50% Red <20%
Charging Time	1 hr – 50% capacity 2.5 hr – 100% capacity
Battery Certification	UN38.3 Certified for: <ul style="list-style-type: none">• Altitude• Thermal• Vibration• Shock• External Short Circuit• Impact / Crush• Overcharge• Forced discharge

Technical Datasheet SLM0750XD1S0-S-X7 REV. -
Mechanical Characteristics

Water Resistance	IP65 (protected against waterjet from any angle, do not submerge)
Temperature Range	-40°F to 120°F
Overall Weight	4.4 lb

Kit Content

- Black Nano Sport w/ on-body dimmer
- Integrated black anodized aluminum bracket
- 100Wh battery with integrated fixed handle
- Aluminum U-frame for battery integration
- All-terrain twist-lock stabilizer base
- Power plug
- Battery charger
- Explorer backpack gear (available for purchase separately)



Warranty Terms

We stand behind our products. This product is covered by Durabrite's 2 Year Limited Warranty against material and manufacturing defects. It does not cover application and conditions that are outside of the product design parameters, abuse, and wear-and-tear. Further details can be found on our website at: <https://durabritelights.com/pages/warranty>

Operation Instructions

A. Charging Function

Prior to use, charge the light for at least 2.5 hours until the charge indicator on the charger turns green. Green indicates the charge is complete. Otherwise, it will show an orange color. The charging port is at the top of the battery pack and is covered by a rubber seal, next to the On/Off switch. Lift open the seal, and insert the battery charging port into the matching recess to charge. The port is magnetic and it should simply snap in place. It is a IP67 sealed magnetic port. The battery charger indicator would light up and turn from Green (standby mode if not connected) to Orange if the connection is properly made.

B. Closing the Charging Port Rubber Cap

It is engineered to seal the port against the elements so it does not collect water when in use. It is therefore slightly tighter to install. The trick is to use a “twist-squeeze” action to install it in place. It is made out of a tough TPU material so it will not tear. Try to engage one side first, then twist and squeeze it in place. After a few operations, it should close easier than the first time.

C. On/Off Function

There are two ways to turn the light on/off.

- (1) There is an on/off switch with the Durabrite logo at the top of the battery pack (underneath the handle). It's a latching switch. Depress once, it will turn on the battery power. Depress once more, it will cut off the battery power.
- (2) There is a dimming switch on the light body, below the battery pack. Turn counter-clockwise all the way for full brightness. Turn clockwise to dim it down or to turn it off. You may leave the dial at the max position and simply operate the on/off switch on the battery.

D. Run Time

The battery has a capacity of about 96Wh (ranges from 93Wh to 98Wh depending on batch of cells). This will give you roughly 2.3 hrs of run time depending on ambient temperature condition. Like all batteries, when it's cold out, the run time may be reduced accordingly. The run time will also reduce over time as it ages. On the battery, there is an LED indicator. Below legend will give you an idea of how much capacity is left.

- Green > 50%
- Orange >20%, <50%
- Red <20%

E. Battery Pack Installation and Removal

From time to time, you may want to swap the battery pack with a fresh one. To do so, turn off the battery first. When the battery is in the Off state, the battery indicator should be Off as well. Then remove the power cable that connects the battery and the light. On the battery where the power cable is plugged in, you will see a slide lock that is designed to lock in the power plug so it cannot get loose or back out during operation. Slide that out toward you (it can only go out a tiny bit and cannot move out entirely), and you will be able to pull the power plug out. Like the charging port, this plug is also a IP67 sealed magnetic port.

After the power plug is disengaged, you will be able to remove the battery. The battery pack is engaged with the light body via a track system. There is also a lock on the top of the battery to keep the battery in place. That lock is spring loaded. Pull the stainless steel lock button back, and you will be able to pull the battery straight up along the tracks.

To install a fresh battery, slide the battery pack into the tracks all the way down until it clicks. The spring loaded lock should automatically engage and keep it in place. Then plug back in the power cable into the light firmly, and push the slide lock in all the way to keep it secure.

F. All-Terrain Stabilizer Base Installation and Removal

There is a stabilizer base that comes with every light. It enables you to place it on nearly any surface (dirt, soil, grass, sand, mud, debris) and the X7 unit will not topple. It also helps elevate the lighting unit to stay off running water.

The stabilizer base is made of a super tough TPU resin so it can take a lot of beating and will not crack or tear for the life of the product.

To install, identify the two arc-features and line them up to the bracket. It is best to position the light in an upside down position and hold it in place in between your thighs. Insert the two arc protrusions into the matching slots in the bracket. Hold it down firmly then turn counter clockwise. When the stabilizer base is in place, you will hear or feel a click. The four stumps on the stabilizer base will lock in with the 4 matching holes in the bracket. This is an anti-backout feature so it will stay very secure during use.

To remove the stabilizer base, place the entire unit, upside down, and in between your thighs. Hold 2 legs by one hand and the other 2 by another hand. Lift up both sides to disengage the 4 stumps, then you will be able to turn clockwise to remove the stabilizer base.

G. Light Angle Adjustment

You may want to adjust the light angle for your application. To do so, use an Allen key to loosen one of the side bolts on the light bracket. Adjust to desired angle, and retighten as required.

Authorised Distributor



t: +44 1264 860 186

e: spares@simplexturbulo.com



Simplex-Turbulo is part of the **SLX** GROUP