



DELTA-XERO

THE FUTURE IS SYSTEM RELIABILITY

DX1012-T

The DX modular housing arrangement offers a flexible and space conscious solution to integrate our innovative DXO Cartridge in to both new and existing systems. The Delta-Xero system can be configured up to 12 cartridges in parallel as a single unit in a compact and easily maintainable layout.

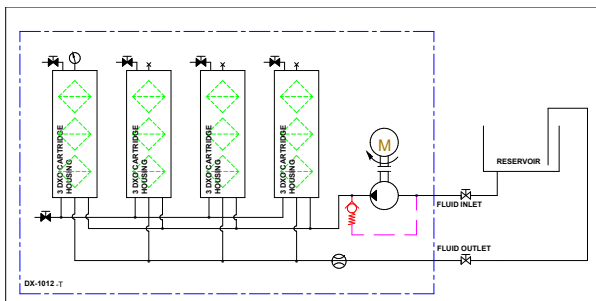
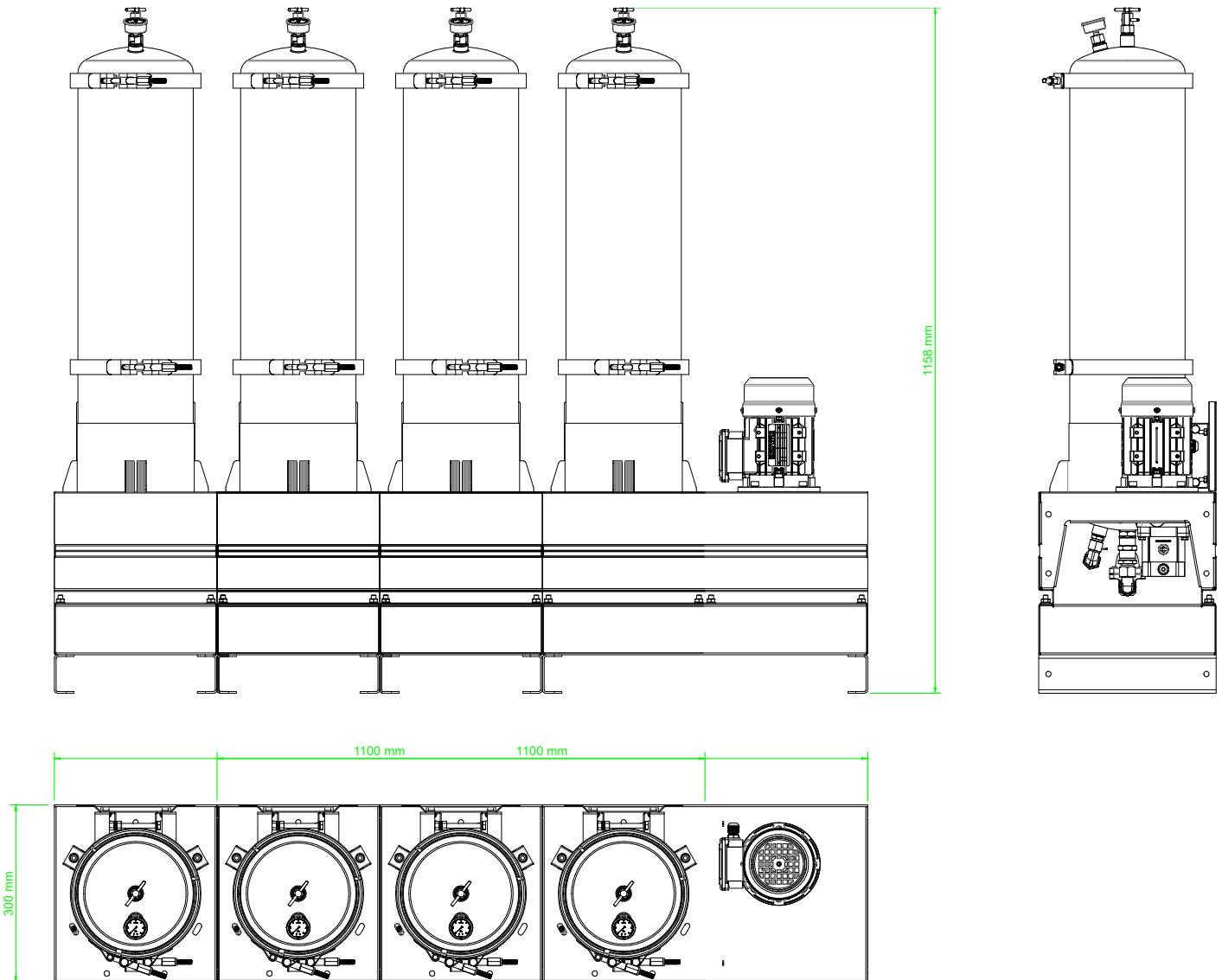
The unit can be supplied with a number of standard options to provide an effective fluid conditioning and monitoring package to suit the majority of systems. The flexibility of the unit allows tailoring to customer's specific requirements.



DX1012-T

Drive Input	Electric or Pneumatic							
Connection Ports	3/8" BSP In & Out							
Flow Indicator	Visual							
Suggested System Volume	Up to 72000l @ 32cSt							
Particulate Removal	From 0.1 μ							
Weight	85 kg							
Dimensions	H 1158 mm x D 300 mm x L 1374 mm							
Material	SS316							
DXO Cartridge QTY	12							
Flow Rate <small>varies depending on viscosity, pressure and temperature</small>	<table border="1"> <tr> <td>Approx flow at 2.7 bar:</td> <td>32 cSt 12.7 l/min</td> <td>46 cSt 9 l/min</td> </tr> <tr> <td>Oil Volume</td> <td>72000ltrs</td> <td>61000ltrs</td> </tr> </table>		Approx flow at 2.7 bar:	32 cSt 12.7 l/min	46 cSt 9 l/min	Oil Volume	72000ltrs	61000ltrs
Approx flow at 2.7 bar:	32 cSt 12.7 l/min	46 cSt 9 l/min						
Oil Volume	72000ltrs	61000ltrs						

General Arrangement



DXO Cartridge

Contamination capacity:	Up to 4-5kg per DXO
Water absorption, free and bound:	2600ml
Material insert:	PP Cellulose mix

