



## DX1001-T

The DX modular housing arrangement offers a flexible and space conscious solution to integrate our innovative DXO Cartridge in to both new and existing systems. The Delta-Xero system can be configured up to 12 cartridges in parallel as a single unit in a compact and easily maintainable layout.

The unit can be supplied with a number of standard options to provide an effective fluid conditioning and monitoring package to suit the majority of systems. The flexibility of the unit allows tailoring to customer's specific requirements.



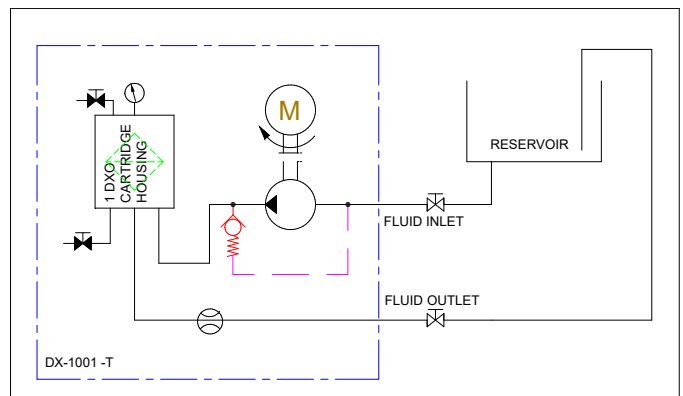
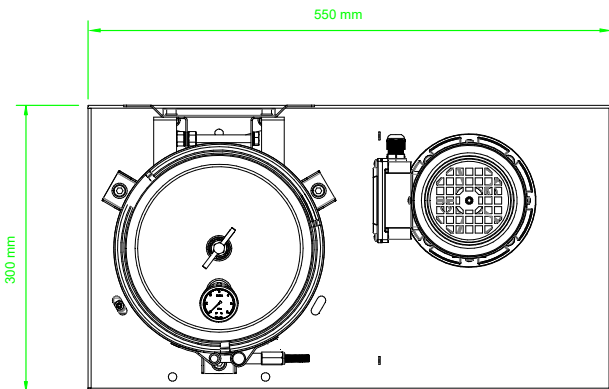
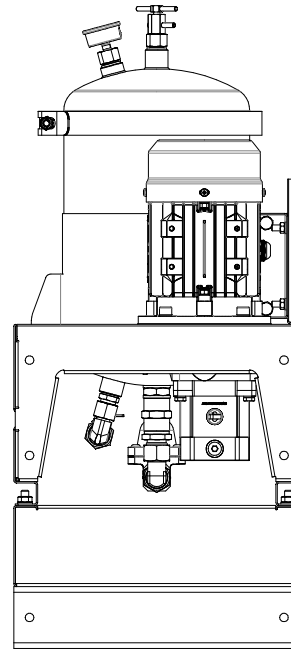
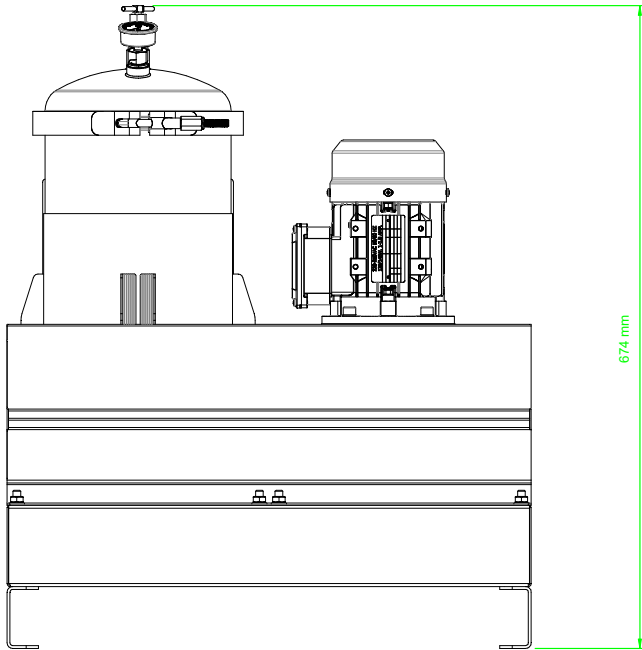
### DX1001-T

|                         |                                |
|-------------------------|--------------------------------|
| Drive Input             | Electric or Pneumatic          |
| Connection Ports        | 3/8" BSP In & Out              |
| Flow Indicator          | Visual                         |
| Suggested System Volume | Up to 4500ltrs @ 32cSt         |
| Particulate Removal     | From 0.1 µ                     |
| Weight                  | 20 kg                          |
| Dimensions              | H 674 mm x D 300 mm x L 550 mm |
| Material                | SS316                          |
| DXO Cartridge QTY       | 1                              |

Flow Rate varies depending on viscosity, pressure and temperature

| Approx flow at 2.7 bar: | 32 cSt     | 46 cSt    | 68 cSt    | 100 cSt   | 220 cSt   | 320 cSt   | 460 cSt   |
|-------------------------|------------|-----------|-----------|-----------|-----------|-----------|-----------|
|                         | 1.25 l/min | 1.0 l/min | 0.8 l/min | 0.6 l/min | 0.4 l/min | 0.2 l/min | 0.1 l/min |
| Oil Volume              | 4500ltrs   | 3500ltrs  | 3000ltrs  | 2400ltrs  | 1800ltrs  | 800ltrs   | 400ltrs   |

## General Arrangement + Schematic



### Cartridge Data: DXO

|                                         |                     |
|-----------------------------------------|---------------------|
| Contaminated weight:                    | Up to 4.5kg per DXO |
| Water holding capacity, free and bound: | Approx. 2600ml      |
| Material insert:                        | PP Cellulose mix    |



Authorised Distributor



t: +44 1264 860 186  
e: spares@simplexturbulo.com

Simplex-Turbulo is part of the **SLX** GROUP