



DuraBrite Explorer X16 is the most powerful and longest running portable light in its class. At only 20lbs, it can run for 7 hours at full blast on a single charge, delivering 16,670 blasting lumens. The integrated on-body precision dimmer allows it to be dimmed down for extended run time.

Based on DuraBrite's bestselling model, the Mini, *Explorer X16* is designed for users who require an extensive amount of light for commercial, industrial, or safety operations. The integrated battery has an impressive 770Wh capacity packed into a very compact unit.

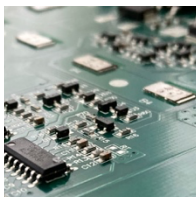
The X16 comes with a built-in battery indicator. A toggle is also available that allows the user to switch between dimming mode and instant full blast with the flick of a switch.

The *Explorer X16* is IP65 rated, allowing usage in harsh outdoor environments.

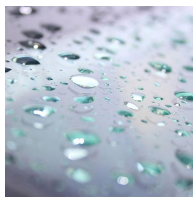
The base is equipped with shock absorbing non-slip rubber feet so the light can be placed on a wide variety of surfaces. An optional flood lens is available to change optics from spot to flood in seconds.

The X16's tremendous capability will continuously power you through your mission and activities with no down time and you will no longer fear the dark. It has won the USAF Innovative Technology award and is the light of choice by USAF, fire departments, and other agencies that demand high performance, portable lighting.

DuraBrite Explorer X16 – Light up the Night with Confidence!



Advanced
Battery
Technology



Extreme
Weather
Resistance



Designed &
Assembled
In USA

Optical & Electrical Characteristics (All ratings are at 25°C unless otherwise specified)

LED Color, CCT	Typical = 5000K (Neutral white) Lower limit = 4700K; Upper limit = 5300K
Brightness	16,670 lm (raw)
Beam Angle	20 deg (Spot) 80 deg (Flood)
Charger Input Voltage	Auto detect voltages 100 – 240VAC 50-60Hz Single Phase
Charger Output Voltage / Battery Input Voltage	16.3VDC
Charger Status Indicator	Green – Charge complete Red – Charging
Charging Temperature (Storage Temperature)	32°F to 100°F (-4°F to 176°F)
Battery Capacity	770Wh max
Run Time	Approx. 7 hr continuous max output# # Run time varies based on ambient temperature and battery age
Battery Status Indicator	Actual voltage shown. Refer to Label
Charging Time	6 hrs for a full charge
Battery Certification	UN38.3 Certified for: <ul style="list-style-type: none">• <i>Altitude</i>• <i>Thermal</i>• <i>Vibration</i>• <i>Shock</i>• <i>External Short Circuit</i>• <i>Impact / Crush</i>• <i>Overcharge</i>• <i>Forced discharge</i>

Mechanical Characteristics

Water Resistance	IP65 (protected against waterjet from any angle, do not submerge)
Temperature Range	-4°F to 120°F
Overall Weight	19.9 lb

Warranty Terms

We stand behind our products. This product is covered by DuraBrite's 5 Year Limited Warranty against material and manufacturing defects. It does not cover application and conditions that are outside of the product design parameters, abuse, and normal wear-and-tear. Further details can be found on our website at: <https://durabritelights.com/pages/warranty>

Authorised Distributor



t: +44 1264 860 186
e: spares@simplexturbulo.com



Simplex-Turbulo is part of the **SLX** GROUP